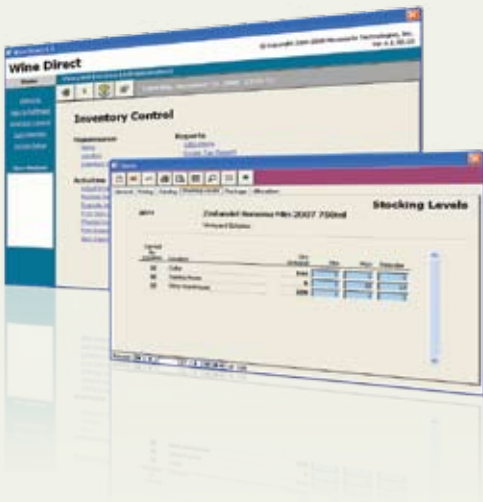


Overview

Microworks **Wine Direct 4.1** is a **completely integrated** industry-specific solution for managing your tasting room, direct sales, customers and inventory.

Use the **Inventory Manager** to manage your inventory. Be it wine or non-wine, you have all the controls and tools to manage multiple inventory locations effectively.



Track Multiple Locations

Tracks multiple inventory locations such as Tasting Room, Cellar, Warehouse, Fulfillment House. Inventory Manager recognizes Tax Paid and Bonded locations and can report activity in bottles, cases, liters and gallons. Whether it is onsite or offsite, Wine Direct can track it.

Suggested Re-ordering

Avoid out of stock conditions and lost sales on popular items by keeping track of where your inventory is and when to re-order. Specify minimum/maximum stocking levels and your desired reorder levels and Wine Direct will tell you when and how much to re-order.

Automatic Barcode Generation

Use existing barcodes, or automatically generate your own barcodes for products with the ability to scan your products for quick and accurate transactions at the cash register.

Allocations

Use the allocations feature to establish budgets by sales channel. Allocations can also be used to set and measure sales goals and minimize the risk of overselling on committed inventory. You can set an allocation for selected products or all products.

Features

- Track Multiple Locations
- Track up to Six Price Levels
- Three cost methods (Average/Fixed/% of Selling Price)
- Tax Paid and Bonded Inventories
- Allocations
- Package Items / Gift Baskets
- Report in bottles or cases
- Volumetric Conversions
- Inventory Status by Location
- Min/Max Stocking Levels
- Suggested Re-order Reports
- Automatic Depletion of Sales
- Inventory Allocation & Availability
- Adjust, Receive and Transfer
- Automatic Barcode/Price Label Creation
- Physical Inventory Reconciliation

Physical Inventory Reconciliation

Have confidence in your inventory by reconciling on a regular basis. Our Physical Inventory module allows you to take a snapshot of your inventory to reconcile against your physical counts.